

Inset (See Next Sheet)

Overview

Town of Lapel Indiana

Pavement Management System

Pavement Condition Plan

0 485 970 1,940 Feet

KHA Project 170214001
Date 01/18/2022
Scale As Shown
Designed By: MDH
Drawn By: MDH
Checked By: EAK

Kimley»Horn

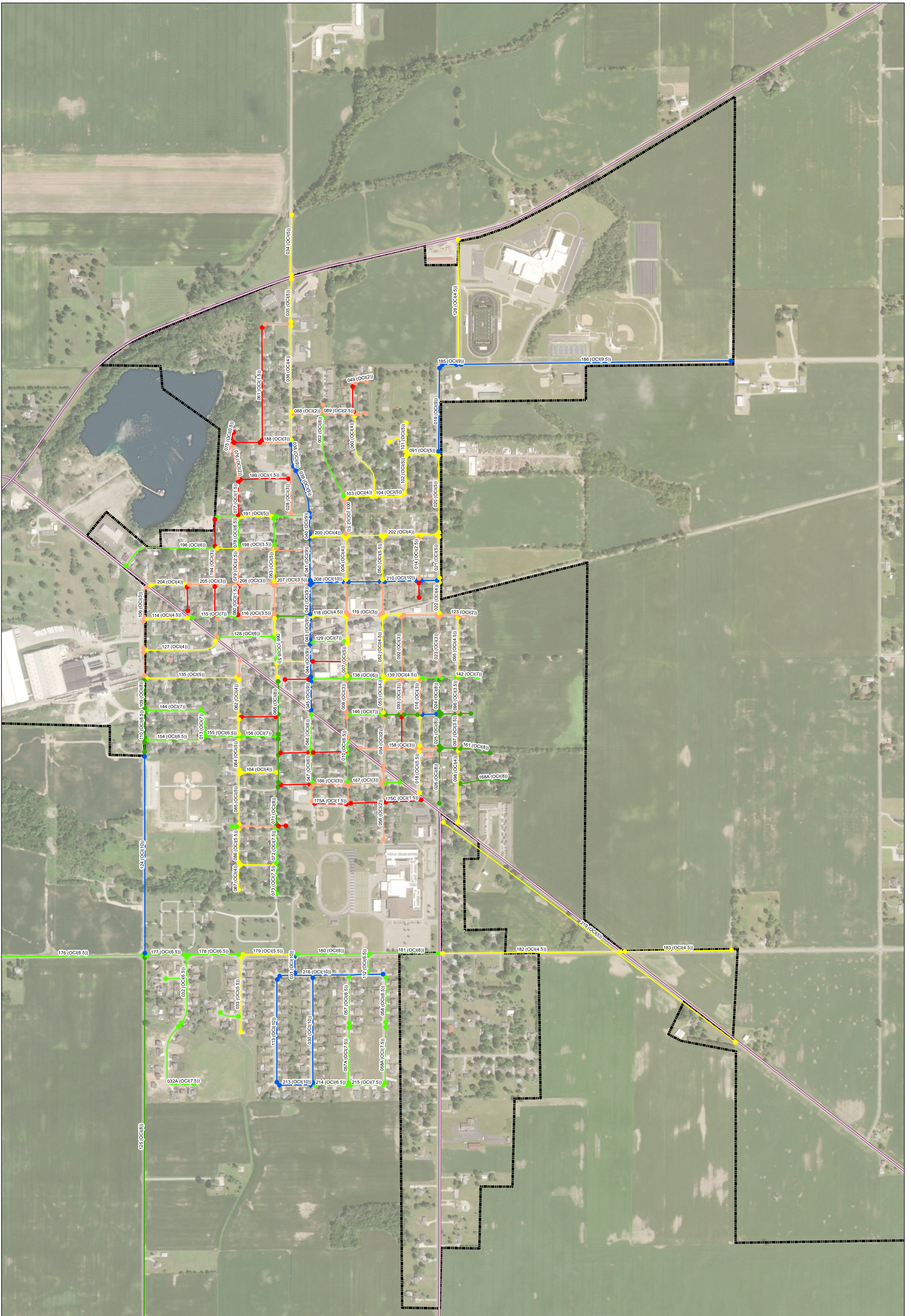
© 2022 Kimley-Horn and Associates, Inc.
4201 Warrenville Road, Suite 600,
Warrenville, IL 60555
Phone: 630-487-5550
www.kimley-horn.com

Overall Condition Index (OCI)

- (0.00 - 1.90) Failed
- (1.90 - 3.90) Poor
- (3.90 - 5.90) Fair
- (5.90 - 7.90) Good
- (7.90 - 8.90) Very Good
- (8.90 - 10.00) New/Excellent

Legend

- Interstate Route
- State Route
- ▭ City Limits



**Town of Lapel
Indiana
Pavement Management System**

**Pavement
Condition
Plan**

0 187.5 375 750
Feet

KHA Project
170214001

Date
01/18/2022

Scale As Shown

Designed By: MDH
Drawn By: MDH
Checked By: EAK

Kimley»Horn

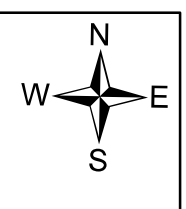
© 2022 Kimley-Horn and Associates, Inc.
4201 Warrenville Road, Suite 600,
Warrenville, IL 60555
Phone: 630-487-5550
www.kimley-horn.com

Overall Condition Index (OCI)

- (0.00 - 1.90) Failed
- (1.90 - 3.90) Poor
- (3.90 - 5.90) Fair
- (5.90 - 7.90) Good
- (7.90 - 8.90) Very Good
- (8.90 - 10.00) New/Excellent

Legend

- Interstate Route
- State Route
- City Limits



Source: Esri, Maxar, GeoEye, Earthstar Geographics, CNES/Airbus DS, USDA, USGS, AeroGRID, IGN, and the GIS User Community

Coordinate System: NAD 1983 UTM Zone 16N